



Catalogue

Interior Decoration

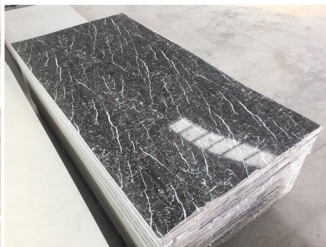


石塑板 (室内装饰板) SPC Board (Interior)

石塑板 (室内装饰板) SPC Board (Interior)



Instead of natural marble, used for wall decoration.



Marble Texture Surface

—Wall Panel—



产品规格 / Products Specification		
厚度 / Thickness	宽度 / Width	长度 / Length
2.7mm,3mm,4mm	1220 mm	2440 mm

REMARK : Specific conditions which can be produce other specification sheet according to special requirements



- 1) Non flammability:PVC decorative board is non-flammable and conforms to the national grade
- 2) Water-proofing and moisture-proofing: The product is allowed to long-term expose to moist environment.
- 3) Problem free:PVC decorative board provides good insulation against bugs, fungus and corrosion. It can last for a long-time and will not corrode.
- 4) It is glossy, wear-resistant, easy clean, the hardness can reach 3H-6H.
- 5) The weight is only one fifth for the natural marble, and price is one tenth of the natural marble.

集成墙板

Integrated Wall Panel

集成墙板

Integrated Wall Panel



Material: WPC(Bamboo fiber)

Available Width: 300mm, 600mm

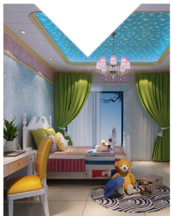
Thickness: 9mm

Standard Length: 3meters, 2.8meters (other length please advise us)

Surface treatment: PVC Film laminated

Color: see color card

Application: Interior Wall Panel, Ceiling Panel, Decoration Panel



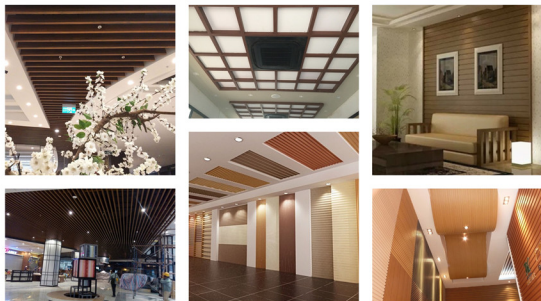
The integration fast installation wall panel not only has the surface of natural wood, but also overcomes the disadvantages of natural wood. It's also easy to be processed, the same with wood, can be sawed, nailed, planed, just by the carpenters' tools, and better nail-holding ability than usual normal wood; and has the same compressive property, impact resistance with hard wood, much more durable than normal wood. WPC and its products, are anti-corrosive alkali, waterproof, not breeding bacteria, insect prevention; anti-aging, anti-static, antiflaming. The integration wall panel not only has the colorful patterns the same with wallpaper, painting, but also has strong third dimension and sense of concavo-convex, is a substitute product of wallpaper and painting.

Characters & Advantages

1. Heat preservation thermal insulation
2. Sound insulation
3. Waterproof & Dampproof
4. Fireproof
5. Ultra-hard
6. Environment friendly
7. Easy installation
8. Easy to clean, no warp
9. Fashion and bright
10. Saving space, simple installation

生态木类产品

Incore series products



WONDERFUL DESIGN

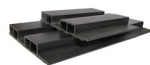
The world is not beautiful, therefore it is.

2019-7-1



生态木类产品

Incore series products



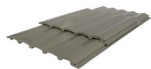
137 great wall panel
Model: YXC-03
Size: 137*20mm



150 wall panel
Model: YXC-19
Size: 150*17mm



150 great wall panel
Model: YXC-04
Size: 150*9mm



150 wall panel
Model: YXC-23
Size: 150*10mm



150B wall panel
Model: YXC-4B
Size: 147*7mm



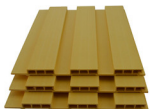
100 wall panel
Model: YXC-26
Size: 100*10mm



195 great wall panel
Model: YXC-06
Size: 195*15mm



Double 75 panel
Model: YXC-31
Size: 150*10mm



195B great wall panel
Model: YXC-6B
Size: 195*12mm



120 decking
Model: YXD-03
Size: 120*25mm



195 high great wall panel
Model: YXC-07
Size: 195*30mm



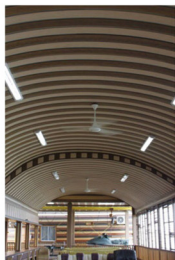
140 decking
Model: YXD-04
Size: 140*25mm



150 wall panel
Model: YXC-10
Size: 150*8mm



Corner line
Model: YXJ-08
Size: 70*30mm





生态木类产品

Incore series products

生态木类产品

Incore series products



40*25 pillar
Model:YXF-01
Size:40*25mm



100*25 pillar
Model:YXF-08
Size:100*25mm



40*20 ceiling tile
Model:YXT-01
Size:40*20mm



80*40 ceiling tile
Model:YXT-08
Size:80*40mm



50*16 pillar
Model:YXF-02
Size:50*16mm



100*35 pillar
Model:YXF-09
Size:100*35mm



40*45 ceiling tile
Model:YXT-02
Size:40*45mm



100*50 ceiling tile
Model:YXT-09
Size:100*50mm



50*25 pillar
Model:YXF-03
Size:50*25mm



100*50 pillar
Model:YXF-10
Size:100*50mm



100*20 ceiling tile
Model:YXT-03
Size:100*20mm



120*100 ceiling tile
Model:YXT-10
Size:120*100mm



40*50 pillar
Model:YXF-04
Size:40*50mm



150*50 pillar
Model:YXF-12
Size:150*50mm



40*100 ceiling tile
Model:YXT-04
Size:40*100mm



150*50 ceiling tile
Model:YXT-12
Size:150*50mm



65*25 pillar
Model:YXF-05
Size:65*25mm



180*80 pillar
Model:YXF-13
Size:180*80mm



50*90 ceiling tile
Model:YXT-05
Size:50*90mm



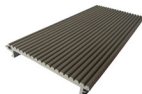
50*60 ceiling tile
Model:YXT-13
Size:50*60mm



75*50 pillar
Model:YXF-06
Size:75*50mm



150*35 pillar
Model:YXF-14
Size:150*35mm



100 ceiling tile
Model:YXT-06
Size:100*14mm



50*25 ceiling tile
Model:YXT-14
Size:50*25mm



60*60 pillar
Model:YXF-07
Size:60*60mm



70*60 ceiling tile
Model:YXT-07
Size:70*60mm



50*75 ceiling tile
Model:YXT-15
Size:50*75mm